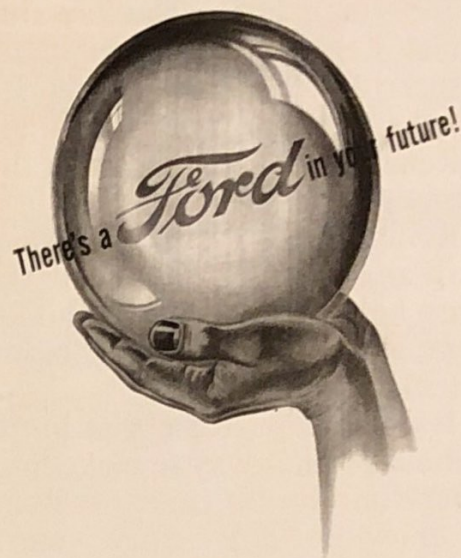


Kicsak's Komments

1941-1948 DOOR LOCKS... THE "HOLE" STORY



By Mark Kicsak

As you may guess, this story has something to do with holes. Two of them having to do with door locks to be exact. There are several reasons why one would want to remove a door lock. They are a non-working lock, painting, door latch removal, etc.

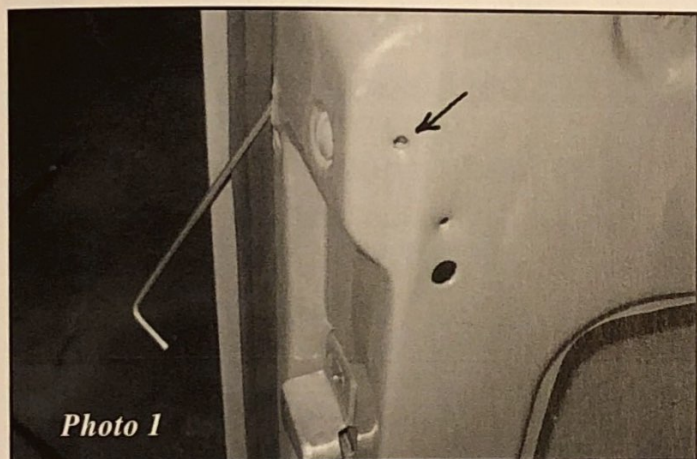


Photo 1

The first step to removing the lock is to loosen the set screw that holds the lock in place. **Photo #1** shows an Allen wrench in the set screw. In addition you will notice a hole as indicated by an arrow. Once the set screw is loose the lock can often be removed by the bezel. Other times, it will be reluctant to move. (It is a good idea to remove the set screw to insure it is disengaged from the lock. Plus you can coat it with anti-seize to insure it will come out the next time.)

Use a quality small punch that fits in the hole shown in photo #1 and tap using a small hammer and the lock should start to move.

Once it has begun to move, you will grasp the bezel and pull the lock out.

Photo #2 shows a factory door lock and an 8-inch length of tig welding rod. Notice the hole in the end of the square shaft on the lock.

As a young man I often wondered why that hole was there. I had done door locks

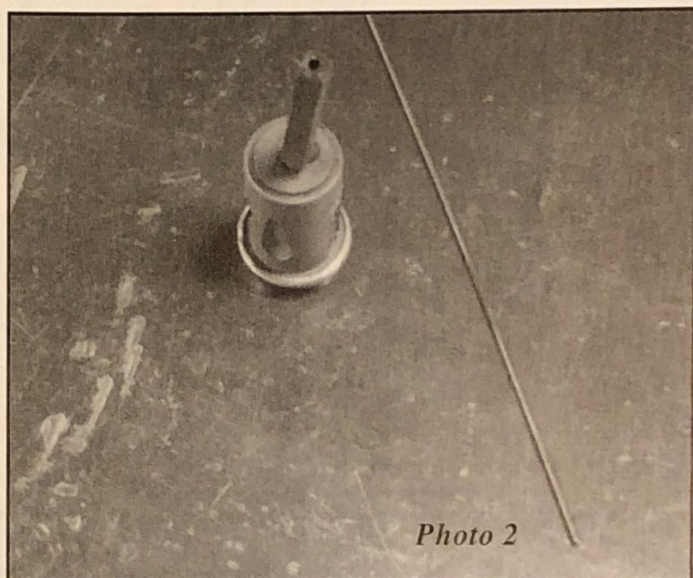


Photo 2

and always had trouble getting the square shaft to engage the door latch as it should. At some point I had an epiphany and realized the hole in the door and the hole in the lock made perfect sense. This is where the tig rod comes into play.



Photo 3

Slide the rod through the door till it shows on the outside of the door. Engage the hole of the square shaft to the tig rod as shown in **Photo #3**.

Slide them together until you have entered the door latch. The key slot should be vertical. Replace the set screw and snug it up.

Insert key and try the lock. If it does not work the lock is out of line with the latch.

Remove the lock and with the key. Turn the lock the opposite direction of what it was.

Reinsert lock into door and latch. If there is still an issue it could be with the latch. The square hole the lock fits in should be rotated to one extreme or the other before inserting the lock.

It does seem to me that Ford sometimes went out of their way to make things difficult to work on. Not the case with door locks once you know the "hole" story. - Mark Kicsak